

## BADET SU1058



### DESCRIPTION

Two-colour unisex hoodie. Hood with crossed neck and metal eyelets. Contrasting inner hood, drawcord and raglan sleeves. Kangaroo pocket. Cuffs and hem in 1X1 elastane rib knit.

### COMPOSITION

50% cotton / 50% polyester, brushed fleece, 280 gsm. Heather grey colour: 55% cotton / 40% polyester / 5% viscose.

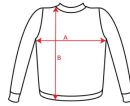
### REMARKS

\* Removable label.

### SIZES

Adults:: XS · S · M · L · XL · 2XL · 3XL / Kids:: 3/4 · 5/6 · 7/8 · 9/10 · 11/12

### SCHEME



### QUANTITIES

	Box	Pack
<b>Adults:</b>	25 un.	1 un.
<b>Kids:</b>	25 un.	1 un.

### COLORS



### SIZES

Adults:	XS	S	M	L	XL	2XL	3XL
WIDTH (A)	49cm	52cm	55cm	58cm	61cm	65cm	69cm
LONG (B)	65cm	67cm	69cm	71cm	73cm	75cm	77cm
Kids:	3/4	5/6	7/8	9/10	11/12		
WIDTH (A)	33cm	36cm	39cm	42cm	45cm		
LONG (B)	44cm	48cm	52cm	56cm	60cm		

\*[Measured from the edge 1 cm below the sleeves / Measured from the highest point of the shoulder to the end of the garment]

### PRINTING TECHNIQUES AVAILABLE

