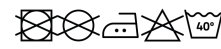


KEMI SU1118



DESCRIPTION

Unisex hoodie. Kangaroo style pocket. Flat drawcord with embroidered eyelets. Cuffs and waist in main fabric. Stitched detail on sleeves.

COMPOSITION

60% cotton / 40% polyester, non-brushed fleece, 280 gsm.

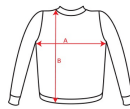
REMARKS

Matching garment: LEVI and DERBY trousers. * Removable label. * Unisex.

SIZES

Adults:: XS · S · M · L · XL · 2XL · 3XL / :

SCHEME



QUANTITIES

Adults:

Box	Pack
20 un.	1 un.



COLORS



SIZES

Adults:	XS	S	M	L	XL	2XL	3XL
WIDTH (A)	49cm	52cm	55cm	58cm	61cm	65cm	68cm
LONG (B)	65cm	67cm	69cm	71cm	73cm	75cm	77cm

*[Measured from the edge 1 cm below the sleeves / Measured from the highest point of the shoulder to the end of the garment]

PRINTING TECHNIQUES AVAILABLE



Heat transfer printing



Handling

