

KA240 BROOKE - LADIES' SHORT-SLEEVED POLO SHIRT



KARIBAN

MAIN FEATURES

220 g/m²
 95% cotton/5% elastane
 Piqué knit
 Ribbed collar with neck tape
 Ribbed cuffs
 Side slits
 Twin needle finishing at the hem
 2-button placket

Suggested Decoration:

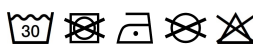
Embroidery

Certifications:

STANDARD
100

Country Of Origin:

Bangladesh



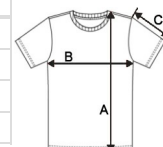
2025 : p. 68

2024 : p. 238



SIZE SPECIFICATION (CM)

	XS	S	M	L	XL	2XL
Pcs./📦	25	25	25	25	25	25
Body Length (A)	60	62	64	66	68	70
Chest Width (B)	41	44	47	50	53	56
Sleeve Length (C)	13	14	14	15	16	17



COLORS:

Black
 Dark Grey
 Navy
 Sage
 White