

## RETRA150 CLASSIC 3-IN-1 WATERPROOF JACKET



**REGATTA**  
PROFESSIONAL

HYDRAFORT 5000

SYMMETRY

### MAIN FEATURES

195 g/m<sup>2</sup>

#### Fabric Information

Waterproof Hydrafort 5000 peached polyester fabric

Polyester taffeta lining

Windproof fabric

Critical seam taping

220 series anti-pill Symmetry fleece

#### Special Features

Concealed hood with adjusters

Adjustable cuffs

2 zipped lower pockets

Hook and loop fastening at hem for embroidery access

Interactive

2 lower pockets

Made using recycled materials

#### Suggested Decoration:

Heat transfer, Screen printing

#### Country Of Origin:

China



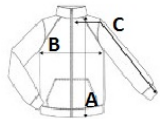
2025 : p. 354

2024 : p. 609



### SIZE SPECIFICATION (CM)

	XS	S	M	L	XL	2XL	3XL
Pcs./📦	8	8	8	8	8	8	8
Body Length (A)	0	76.50	76.50	79	79	81.50	81.50
Chest Width (B)	0	54	58	62	66	71	75
Sleeve Length (C)	0	67	68	69	70	71	72



### COLORS:

Black/Black
  Classic Red/Black
  Navy/Navy
  Seal Grey