

## KA465 LADIES' CONTRAST HOODED SWEATSHIRT



## KARIBAN

## MAIN FEATURES

280 g/m<sup>2</sup>

80% combed cotton/20% polyester (Oxford Grey: 76% combed cotton / 21% polyester / 3% viscose)

Brushed fleece

Kangaroo pocket with earphone access

Ribbed cuffs and hem

Contrast lined hood with drawcord

Certified STANDARD 100 by OEKO-TEX® N° CQ1007/7, IFTH

**Outstanding size tolerance: 10%****Suggested Decoration:**

Embroidery

**Certifications:**STANDARD  
100**Country Of Origin:**

Pakistan, Bangladesh



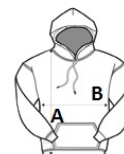
2025 : p. 215

2024 : p. 434



## SIZE SPECIFICATION (CM)

|                   | XS | S  | M  | L  | XL | 2XL |
|-------------------|----|----|----|----|----|-----|
| Pcs./📦            | 20 | 20 | 20 | 20 | 20 | 20  |
| Body Length (A)   | 62 | 64 | 66 | 68 | 70 | 72  |
| Chest Width (B)   | 45 | 48 | 51 | 54 | 57 | 60  |
| Sleeve Length (C) | 62 | 63 | 64 | 65 | 66 | 67  |



## COLORS:

|                        |                         |                    |                 |                   |                         |
|------------------------|-------------------------|--------------------|-----------------|-------------------|-------------------------|
| Black/Fine Grey        | Black/Red               | Black/Yellow       | Dark Grey/Black | Fuchsia/Fine Grey | Light Kelly Green/White |
| Light Royal Blue/White | Light Royal Blue/Yellow | Navy/Fine Grey     | Navy/Red        | Orange/White      | Oxford Grey/Navy        |
| White/Fine Grey        |                         | Purple/Oxford Grey | Red/White       | Sky Blue/White    | Tropical Blue/White     |