

## PR222 MEN'S JEANS STITCH DENIM SHIRT



## MAIN FEATURES

155 g/m<sup>2</sup>**Fabric**

100% Cotton Ring-Spun Denim Fine Twill

155gsm

**Features**

Contrast stitch details

Left chest button-down pocket

Buttoned cuff and buttoned sleeve guard

Curved hem

Modern fit

**Suggested Decoration:**

Embroidery, Heat transfer, Screen printing

**Certifications:****Country Of Origin:**

Bangladesh



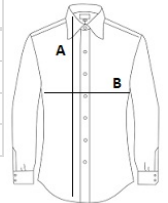
2025 : p. 100

2024 : p. 287



## SIZE SPECIFICATION (CM)

	XS	S	M	L	XL	2XL	3XL
<b>Pcs./</b>	24	24	24	24	24	24	24
<b>Body Length (A)</b>	79	79	80	80	81	81	82
<b>Chest Width (B)</b>	50	54	57	62	67	72	77
<b>Neckline length</b>	36	39	40	42	44	46	48



## COLORS:

 Black Denim

 Indigo Denim