

PR683 'BLOSSOM' BEAUTY AND SPA TUNIC



MAIN FEATURES

185 g/m²**Fabric**

100% Polyester plain weave

185gsm

Features

Beauty and Spa tunic with feature button front fastening with concealed zip

Mandarin collar

Short sleeve

Princess seams

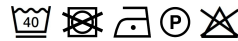
Side vents

Back pleat for ease of movement

Easycare

Certifications:**Country Of Origin:**

China

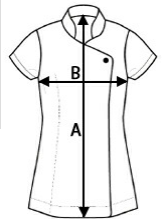


2025 : p. 154



SIZE SPECIFICATION (CM)

	XS	S	M	L	XL	2XL
Pcs./📦	12	12	12	12	12	12
Body Length (A)	71	72	72	73	74	75
Chest Width (B)	47	49.50	52	54.50	57	60



COLORS:

 White