

PR691 'IVY' BEAUTY AND SPA TUNIC **Outlet****MAIN FEATURES**185 g/m²**Fabric**

100% Polyester plain weave

185gsm

Features

Beauty and Spa tunic with Panel detail

Black contrast panel detail around front neck line

Princess seams and bust darts for flattering fit

Side vents

Back zip fastening

Short sleeves

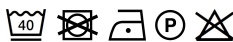
Easycare

Suggested Decoration:

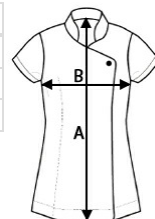
Embroidery, Heat transfer, Screen printing

Certifications:**Country Of Origin:**

China

**SIZE SPECIFICATION (CM)**

	XXS	XS	S	M	L	XL	2XL	3XL	4XL	5XL
Pcs./	12	12	12	12	12	12	12	12	12	12
Body Length (A)	70	71	72	72	73	74	75	76	77	78
Chest Width (B)	44,5	47	49,5	52	54,5	57	60	63	66	69

**COLORS:**

Black/Hot Pink
 Black/Purple
 Black/Strawberry
 Black/Turquoise