

**KA2001** LADIES' SUPIMA® SHORT SLEEVE POLO SHIRT

## KARIBAN

## MAIN FEATURES

- 220 g/m<sup>2</sup>
- 100% cotton
- Piqué knit in Supima® cotton
- Extremely fine and high-quality fabric
- Silky and pleasant hand feel
- Straight fit
- Ribbed collar with decorative contrasting taped neck
- Placket with 3 genuine mother-of-pearl buttons
- Decorative seam finish at hem
- Ribbed cuffs
- No brand label at neck, only size tag for easy relabelling

**Suggested Decoration:**

Embroidery

**Certifications:**STANDARD  
100**Country Of Origin:**

Bangladesh



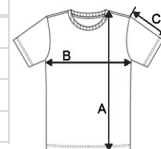
2025 : p. 70

2024 : p. 240



## SIZE SPECIFICATION (CM)

	XS	S	M	L	XL	2XL
<b>Pcs./</b>	30	30	30	30	30	30
<b>Body Length (A)</b>	60	62	64	66	68	70
<b>Chest Width (B)</b>	43	46	49	52	55	58
<b>Sleeve Length (C)</b>	12.25	13	13.75	14.50	15.25	16



## COLORS:

 Black

 Navy

 White