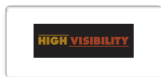


RETRA625 HI-VIS PRO 3 LAYER SOFTSHELL



REGATTA
PROFESSIONAL



MAIN FEATURES

310 g/m²

Fabric Information

Warm backed woven Softshell XPT waterproof and breathable 3 layer membrane fabric

Breathability rating 10,000g/m²/24 hours

Special Features

EN ISO 20471:2013/A1:2016 Class 2

2 zipped lower pockets

Adjustable shockcord hem

Full length zip with inner zip and chin guard

1 chest pocket

Orange colour-way also conforms to RIS-3279/TOM

ID Reflection - Our angled chevrons allow people to know which way you are facing towards or away from them at a quick glance, increasing safety in low light

This product has no external logo branding

Made using recycled materials

Suggested Decoration:

Embroidery, Heat transfer, Screen printing

Country Of Origin:

China



Wash dark colours separately



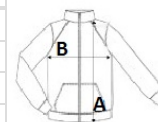
2025 : p. 252

2024 : p. 495



SIZE SPECIFICATION (CM)

	S	M	L	XL	2XL	3XL
Pcs./📦	16	16	16	16	16	16
Body Length (A)	68	70.50	73	73	75.50	75.50
Chest Width (B)	51	55	59	63	68	72
Sleeve Length (C)	66	67	68	69	70	71



COLORS:

Orange/Navy

Yellow/Navy