

JC018 MEN'S COOL LONG SLEEVE BASE LAYER **Outlet**



MAIN FEATURES

- 180 g/m²
- CoolFit blended fabric - 88% Polyester / 12% Elastane
- Tight fit
- Raglan sleeve design creates ease of movement
- Long sleeves for warmth
- Turtleneck design
- Simple tear-off label makes it perfect for rebranding
- UPF 30+ UV protection

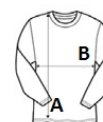
Country Of Origin:

China



SIZE SPECIFICATION (CM)

	XXS	XS	S	M	L	XL	2XL
Pcs./	40	40	40	40	40	40	40
Body Length (A)	0	68	67	69	71	73	75
Chest Width (B)	0	38	41	44	47	50	53
Sleeve Length (C)	0	69	70	71	72	73	74



COLORS:

Arctic White

Fire Red

French Navy

Jet Black

Royal Blue