

## PR901 'ESSENTIAL' LONG SLEEVE CHEF'S JACKET



## MAIN FEATURES

170 g/m<sup>2</sup>**Fabric**

65% Polyester, 35% Cotton Twill

170gsm

**Features**

Five-button wrap over fastening

Long-life resin buttons

Double pen pocket

Mandarin collar

Easy care

**Suggested Decoration:**

Embroidery, Heat transfer, Screen printing

**Certifications:****Country Of Origin:**

Bangladesh



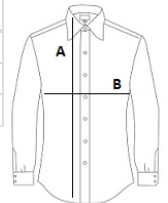
2025 : p. 147

2024 : p. 359



## SIZE SPECIFICATION (CM)

	XS	S	M	L	XL	2XL	3XL	4XL
<b>Pcs./</b>	24	24	24	24	24	24	24	24
<b>Body Length (A)</b>	76	76	76	76	76	76	76	76
<b>Chest Width (B)</b>	48	52	56	60	64	68	72	76



## COLORS:

 Black

 White