

RETRA702 WOMEN'S VENTURER 3 LAYER HOODED PRINTABLE SOFTSHELL JACKET



REGATTA
PROFESSIONAL

SOFTSHELL XPT

WATER REPELLENT

MAIN FEATURES

300 g/m²

Fabric Information

Warm backed woven Softshell XPT waterproof and breathable 3 layer membrane fabric

Breathability rating 10,000g/m²/24 hours

Wind resistant membrane fabric

AtI durable water repellent finish

Special Features

Detachable hood

2 zipped lower pockets

Zipped chest pocket

Adjustable cuffs

Ideal for screen, transfer and vinyl printing

Made using recycled materials

Country Of Origin:

China



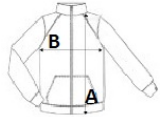
2025 : p. 251

2024 : p. 493



SIZE SPECIFICATION (CM)

	8 (XS)	10 (S)	12 (M)	14 (L)	16 (XL)	18 (2XL)	20 (3XL)
Pcs./📦	16	16	16	16	16	16	16
Body Length (A)	0	64.50	67	67	69.50	69.50	69.50
Chest Width (B)	0	49	51	54	56	60	62
Sleeve Length (C)	0	63.50	64	64.50	65	65.50	66



COLORS:

■ French Blue/Navy
 ■ Black/Classic Red
 ■ Navy/French Blue
 ■ Black/Black
 ■ Navy/Navy
 ■ Seal Grey/Black