

JC116 WOMEN'S CROSS BACK T **Outlet**

**JustCool**  
RWD



**MAIN FEATURES**

- 160 g/m<sup>2</sup>
- Cotton polyester blended performance fabric
- Unique cross back styling
- Cropped length
- Flattering dropped curved hem at front
- Simple tearout label, perfect for rebranding
- Self fabric cuffs and hemFlat lock stitching
- UPF 40+ UV protection - TBC

**Suggested Decoration:**

DTG, Heat transfer, Screen printing

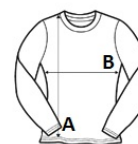
**Country Of Origin:**

Bangladesh



**SIZE SPECIFICATION (CM)**

	XS	S	M	L	XL
<b>Pcs./</b>	40	40	40	40	40
<b>Body Length (A)</b>	55.50	57	60.50	63.50	65.50
<b>Chest Width (B)</b>	42.50	47.50	51.50	55.50	59.50
<b>Sleeve Length (C)</b>	67	68	69	70	71



**COLORS:**

- Arctic White
- Iron Grey
- Jet Black