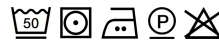


**BCSMP42 B&C HERITAGE SSL /MEN** **New****MAIN FEATURES**

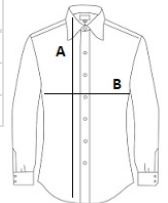
- 120 g/m<sup>2</sup>
- Fine 100% cotton poplin with Easy Care finish
- Cut-away collar
- Cross stitched mother-of-pearl effect buttons
- Folded hem sleeves
- The exclusive B&C Tie-Fix®
- Left chest pocket
- Back yoke with 2 overstitched side pleats
- Inside lap seams for perfect finish
- Horizontal last buttonhole
- Square-shaped bottom hem reinforcement
- Curved bottom hem

**Certifications:**STANDARD  
100**Country Of Origin:**

Bangladesh

**SIZE SPECIFICATION (CM)**

	<b>S</b>	<b>M</b>	<b>L</b>	<b>XL</b>
<b>Pcs./</b>	10	10	10	10
<b>Body Length (A)</b>	80	81	83	85
<b>Chest Width (B)</b>	56	58,5	63,5	68,5

**COLORS:**

Black
  Blue Chip
  White