

RETRA722 PRO HI-VIS SOFTSHELL JACKET **New**
REGATTA
 PROFESSIONAL


SOFTSHELL

MAIN FEATURES260 g/m²

Warm backed woven softshell

Water repellent finish

Conforms to EN ISO 20471:2013 +A1:2016

Class 2

Orange colourway also conforms to RIS-3279/

TOM

2 zipped lower pockets

Angled ID Reflection chevrons show which way wearer is facing

Inner zip and chin guard

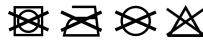
Max 25 Washes

Suggested Decoration:

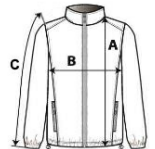
Embroidery, Heat transfer, Screen printing

Country Of Origin:

China

**SIZE SPECIFICATION (CM)**

	S	M	L	XL	2XL	3XL
Pcs./📦	16	16	16	16	16	16
Body Length (A)	68	70.50	73	73	75.50	75.50
Chest Width (B)	51	55	59	63	68	72
Sleeve Length (C)	66	67	68	69	70	71

**COLORS:**

Orange/Navy

Yellow/Navy