

**IB6176** LADIES' PADDED JACKET **New**



**MAIN FEATURES**

- 410 g/m<sup>2</sup>
- 100% polyester 290T
- Padding: 100% polyester
- Lining: 100% tone-on-tone 290T polyester
- Straight fit
- Stand-up collar
- Two side pockets lined in 290T with nylon zips and tone-on-tone zip pullers
- Two inner pockets
- Tone-on-tone nylon zip fastening with chin guard and puller
- Horizontal quilting
- Wider quilting bands (11 cm at the front, 14.5 cm at the back) to enhance decoration
- Tone-on-tone elastic bias finish at sleeve and bottom hems
- Inner hanging loop at collar
- Packable product with storage pouch
- Tear-away brand label
- Injected padding: weight may vary depending on garment zones
- Total weight is indicative

**Certifications:**

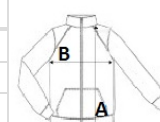


**Country Of Origin:**  
Myanmar



**SIZE SPECIFICATION (CM)**

	<b>XS</b>	<b>S</b>	<b>M</b>	<b>L</b>	<b>XL</b>	<b>2XL</b>
<b>Pcs./</b>	15	15	15	15	15	15
<b>Body Length (A)</b>	61	63	65	67	69	71
<b>Chest Width (B)</b>	46	49	52	55	58	61



**COLORS:**

- Black
- Dark Grey
- Navy