

**IB295 MEN'S PIQUE POLO SHIRT** New



**MAIN FEATURES**

- 180 g/m<sup>2</sup>
- Solid colours: 100% cotton
- Ideal Ash Heather: 99% cotton / 1% viscose
- Ideal Oxford Grey: 90% cotton / 10% viscose
- Piqué knit
- Straight fit
- 1x1 ribbed collar finish
- Placket with 3 tone-on-tone buttons
- Tone-on-tone inner neck tape
- Side slits
- Double-needle finish at sleeve and bottom hems
- Tear-away brand label

**Country Of Origin:**

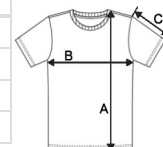
Bangladesh

2026 : p. 88



**SIZE SPECIFICATION (CM)**

	XS	S	M	L	XL	2XL	3XL	4XL	5XL
<b>Pcs./</b>	50	50	50	50	50	50	50	50	50
<b>Body Length (A)</b>	68	70	72	74	76	78	80	82	84
<b>Chest Width (B)</b>	47	50	53	56	59	62	65	68	71
<b>Sleeve Length (C)</b>	21.25	22	22.75	23.50	24.25	25.00	25.75	26.50	27.25



**COLORS:**

- |                    |                   |                   |                  |                 |                    |
|--------------------|-------------------|-------------------|------------------|-----------------|--------------------|
| Ideal Ash Heather  | Ideal Atoll Blue  | Ideal Black       | Ideal Burgundy   | Ideal Dark Grey | Ideal Forest Green |
| Ideal Fuchsia      | Ideal Gold        | Ideal Kelly Green | Ideal Navy       | Ideal Orange    | Ideal Oxford Grey  |
| Ideal Pacific Grey | Ideal Raw Natural | Ideal Red         | Ideal Royal Blue | Ideal Sand      | Ideal Sky Blue     |
| Ideal Urban Khaki  | Ideal White       |                   |                  |                 |                    |