

IB221 LADIES' PIQUE POLO SHIRT **New**



MAIN FEATURES

- 200 g/m²
- Solid colours: 100% cotton
- Ideal Oxford Grey: 90% cotton / 10% viscose
- Piqué knit
- Straight fit
- 1x1 ribbed collar and sleeve hem
- Placket with 4 tone-on-tone buttons
- Tone-on-tone inner neck tape
- Side slits
- Double-needle bottom hem finish
- Tear-away brand label

Certifications:



STANDARD 100

Country Of Origin:

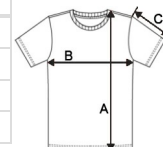
Bangladesh

2026 : p. 89



SIZE SPECIFICATION (CM)

	XS	S	M	L	XL	2XL	3XL
Pcs./	50	50	50	50	50	50	50
Body Length (A)	61	63	65	67	69	71	73
Chest Width (B)	43	46	49	52	55	58	61
Sleeve Length (C)	15.25	16	16.75	17.50	18.25	19	19.75



COLORS:

- Ideal Atoll Blue
- Ideal Black
- Ideal Burgundy
- Ideal Dark Grey
- Ideal Forest Green
- Ideal Navy
- Ideal Oxford Grey
- Ideal Red
- Ideal Royal Blue
- Ideal Sand
- Ideal Sky Blue
- Ideal White