

KA584 LADIES' POPLIN EASY CARE POLYCOTTON SHIRT **New****KARIBAN****MAIN FEATURES**

- 108 g/m²
- 65% polyester / 35% cotton
- Poplin fabric
- Easy care (Easy care treatment)
- Stiffened collar tips
- Single-needle hems
- Lined upper back yoke
- Regural fit
- 2-button cuffs with rounded corners and buttoned capuchin sleeve tab
- Matching buttons
- Rounded hem
- Women's style: straight fit with chest dart for added comfort

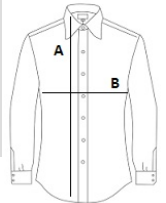
Country Of Origin:

Bangladesh

2026 : p. 237

**SIZE SPECIFICATION (CM)**

	S	M	L	XL	2XL
Pcs./	25	25	25	25	25
Body Length (A)	66.50	68.50	70.50	72.50	74.50
Chest Width (B)	47.50	50.50	53.50	56.50	59.50
Sleeve Length (C)	61	62	63	64	65

**COLORS:**
 Black
 White