

**LS14001** PREMIUM PULLOVER HOODIE **New**


**LANE SEVEN**
**MAIN FEATURES**
280 g/m<sup>2</sup>**Fabrication**

3-End Fleece

8.25 oz (280 GSM)

80% Cotton, 20% Recycled Polyester

**Features**

Three panel hood fleece lined for extra comfort

100% cotton face

Side-seamed

Regular fit

Double-needle topstitch on all seams

Dyed-to-match drawcords with tipped ends and metal eyelets

Kangaroo pocket

Ribbed cuffs and waistband

Tear away tags


Under 5% shrinkage

**Suggested Decoration:**


Digital printing (DTF), DTG, Embroidery, Screen printing

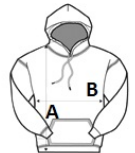
**Country Of Origin:**

Pakistan


 2026 : p. 176

**SIZE SPECIFICATION (CM)**

	<b>XS</b>	<b>S</b>	<b>M</b>	<b>L</b>	<b>XL</b>	<b>2XL</b>	<b>3XL</b>	<b>4XL</b>	<b>5XL</b>
<b>Pcs./</b> 	24	24	24	24	24	24	24	24	24
<b>Body Length (A)</b>	66.04	68.58	71.12	73.66	76.20	78.74	81.28	83.82	86.36
<b>Chest Width (B)</b>	45.72	50.80	55.88	60.96	66.04	71.12	76.20	81.28	86.36


**COLORS:**
 Charcoal Heather
  Heather Grey
  Seafoam
  White