

MONTBLANC CQ6421



DESCRIPTION

Unisex džemperis ar priekšējo rāvējslēdzēju un kapuci. Atbilstošs rāvējslēdzējs. Ķengura kabatas, kapuce, aproces un jostasvieta 2x1 ribā ar elastānu. Šuves veidotas no atbilstoša auduma.

COMPOSITION

50% kokvilna / 50% poliesters. Bīvums: 280 g/m². 3% elastāns uz apocēm Pelēkā krāsa 58: 55% kokvilna / 40% poliesters / 5% viskoze.

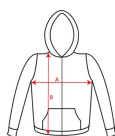
REMARKS

*Pieejami bērnu izmēri. *Noņemama etiķete.

SIZES

Adults:: XS · S · M · L · XL · 2XL · 3XL / Kids:: 3/4 · 5/6 · 7/8 · 9/10 · 11/12

SCHEME



QUANTITIES

	Box	Pack
Adults:	25 un.	1 un.
Kids:	25 un.	1 un.

COLORS



SIZES

Adults:	XS	S	M	L	XL	2XL	3XL
WIDTH (A)	51cm	54cm	57cm	60cm	63cm	66cm	70cm
LONG (B)	63cm	66cm	69cm	72cm	75cm	78cm	81cm

Kids:	3/4	5/6	7/8	9/10	11/12
WIDTH (A)	38cm	40cm	42cm	44cm	46cm
LONG (B)	45cm	49cm	53cm	57cm	61cm

*[Measured from the edge 1 cm below the sleeves / Measured from the highest point of the shoulder to the end of the garment]

PRINTING TECHNIQUES AVAILABLE



Heat transfer printing



Handling

CERTIFICATES



www.oeko-tex.com

